



mediven harmony[®]

The round knitted arm sleeve is suitable for example to be used for less severe, post-traumatic oedemas or oedemas caused by inactivity.

mediven harmony®

Comfortable and effective round-knitted
armsleeve.

Benefits

- The double ellipses on the point and in the crease of the elbow offer freedom of movement. They are designed to assist with lymphatic drainage and to reduce wrinkles to a minimum to prevent soreness.
- High containment: high wall stability with a gentle touch of supple knit.
- Unmatched well-being: the innovative fabric structure stimulates the tissue and exerts a pleasant massage effect.
- The anatomical shape of the armsleeve ensures easy and correct donning and doffing.
- The hand part of the combined armsleeve offers two flat seams and a wedge at the web of the thumb. This reduces the tension and increases compliance.
- The silicone topband is knitted to the armsleeve with a flat and unconscious seam which secures hold but not sticking because of breathability.

Additional benefits

- Perfect Fit
- The skin feels comfortable all year round with Clima Comfort
- Variety: available in 2 compression classes, 3 colours and 2 hand pieces
- Premium quality RAL standard
- Latex-free
- Machine wash gentle cycle at 40° C and cool tumble dry
- Naturally moisturizing properties of Lanolin

Compression

CCL 1, 2

Product benefits



Perfect Fit



Clima Comfort



Variety



Double ellipses



Colours

The article is available in the
following colours.

S = Standard

Sand
S

Caramel
S

Black
S*

* Black: minimum order quantities of 20 pieces per size and variant; approx. 4 weeks delivery period

mediven harmony[®]

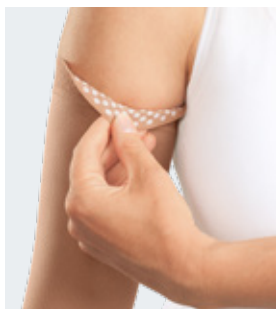
Comfortable and effective round-knitted
armsleeve.

Indications*

- Shoulder arm vein thrombosis
- Postoperative and posttraumatic oedema
- Primary and secondary lymphoedema of the arm stage 1 (conditionally)
- Hand part (glove): prevention of accumulation of lymph fluid in the hand area while wearing a medical compression armsleeve

Please note: not suitable for pronounced oedema

*These indications should be seen as a recommendation. The garment model and the strength of pressure required, i.e. the compression class, depend on the diagnosis, the treatment site, the clinical findings and the patient's susceptibility to oedema. Please also consider the patient's individual requirements and the circumstances (comorbidities, mobility, BMI, state of their skin and tissues, etc.).



Narrow napped silicone
topband



Combined armsleeve with hand part AG, sand



Ellipse in the elbow crease



Ellipse on the point of the elbow

Variants (all variants available as regular or extra wide top)

	AG combined armsleeve		AG combined armsleeve with topband		AG combined armsleeve with shouldercap	
Standard length	Regular	CCL 1 Art.No.: 2Y10x01-8 CCL 2 Art.No.: 2Z10x01-8	Regular	CCL 1 Art.No.: 2Y11x01-8 CCL 2 Art.No.: 2Z11x01-8	Regular	CCL 1 Art.No.: 2Y15x01-8 CCL 2 Art.No.: 2Z15x01-8
	Extra wide	CCL 1 Art.No.: 2Y10x11-8 CCL 2 Art.No.: 2Z10x11-8	Extra wide	CCL 1 Art.No.: 2Y11x11-8 CCL 2 Art.No.: 2Z11x11-8	Extra wide	CCL 1 Art.No.: 2Y15x11-8 CCL 2 Art.No.: 2Z15x11-8
Short length*			Regular	CCL 1 Art. No.: 2Y41701-8 CCL 2 Art. No.: 2Z41701-8		
			Extra wide	CCL 1 Art. No.: 2Y41711-8 CCL 2 Art. No.: 2Z41711-8		
	CG		CG with topband		CG with shouldercap	
Standard length	Regular	CCL 1 Art.No.: 2Y00x01-8 CCL 2 Art.No.: 2Z00x01-8	Regular	CCL 1 Art.No.: 2Y01x01-8 CCL 2 Art.No.: 2Z01x01-8	Regular	CCL 1 Art.No.: 2Y05x01-8 CCL 2 Art.No.: 2Z05x01-8
	Extra wide	CCL 1 Art.No.: 2Y00x11-8 CCL 2 Art.No.: 2Z00x11-8	Extra wide	CCL 1 Art.No.: 2Y01x11-8 CCL 2 Art.No.: 2Z01x11-8	Extra wide	CCL 1 Art.No.: 2Y05x11-8 CCL 2 Art.No.: 2Z05x11-8
Short length*			Regular	CCL 1 Art. No.: 2Y31701-8 CCL 2 Art. No.: 2Z31701-8		
			Extra wide	CCL 1 Art. No.: 2Y31711-8 CCL 2 Art. No.: 2Z31711-8		

x = colour; replace with 5 for black, 7 for caramel or 8 for sand

* Short length only available in caramel

Armsleeve	Size I		Size II		Size III		Size IV	
Circumference (cm)	Regular	Extra wide	Regular	Extra wide	Regular	Extra wide	Regular	Extra wide
cG	25,5-28,0	28,5-31,0	28,0-30,5	30,5-33,5	30,0-33,0	33,0-36,0	32,0-35,0	35,0-38,5
cF	23,5-25,5	25,5-28,0	25,0-27,5	27,5-30,0	27,5-30,0	30,0-33,0	29,5-32,0	32,0-35,0
cE	23,0-25,0	24,0-26,0	24,5-26,5	26,5-29,0	26,0-28,5	28,5-31,0	27,5-30,0	30,0-33,0
cD	22,0-24,0	24,0-26,0	23,0-25,0	25,0-27,5	24,0-26,0	26,0-28,5	25,0-27,5	28,0-30,5
cC1 = 100%**	15,0-16,5		16,5-18,0		18,0-19,5		19,5-21,0	
cC	13,5-14,5		14,5-15,5		16,0-17,5		17,5-19,0	
cA	15,0-18,0		16,0-19,0		17,0-20,0		19,0-22,0	
Armsleeve	Size V		Size VI		Size VII		Size VIII***	
Circumference (cm)	Regular	Extra wide	Regular	Extra wide	Regular	Extra wide	Regular	Extra wide
cG	33,5-36,5	37,0-40,5	36,0-39,5	39,5-43,0	38,0-41,5	41,5-45,5	40,5-44,5	45,0-49,5
cF	31,0-34,0	34,0-37,0	33,0-36,0	36,0-39,5	35,0-38,5	38,5-42,0	37,5-41,0	41,5-45,5
cE	29,0-31,5	31,5-34,5	30,5-33,5	33,5-36,5	32,5-35,5	35,5-39,0	35,0-38,5	38,5-42,0
cD	27,0-29,5	29,5-32,0	28,5-31,0	31,0-34,0	30,5-33,5	33,5-36,5	33,0-36,0	36,0-39,5
cC1 = 100%**	21,0-23,0		23,0-25,0		25,0-27,5		27,5-30,0	
cC	19,0-20,5		20,5-22,5		22,5-24,5		25,0-27,5	
cA	20,0-23,0		22,0-25,0		24,0-27,0		26,0-29,0	
Length (cm)	Standard length		Short length					
	41-47		36-40					

** Measurement cC1 is 5 cm above cC

*** Size VIII: Minimum order quantity of 20 pieces per colour and variant; delivery period approx. 4 weeks

Variants

AC1 hand piece without fingers with thumb base

AC1 glove with compressive fingers



CCL 1 Art.No.: 2Y20x02 – 7
CCL 2 Art.No.: 2Z20x02 – 7

CCL 1 Art.No.: 2Y21x02 – 7
CCL 2 Art.No.: 2Z21x02 – 7

Circumference / Hand part (cm)

Sizes	II	III	IV	V	VI	VII
cC 1 = 100 % *	15,0 – 18,0	17,0 – 20,0	19,0 – 21,5	21,0 – 23,5	23,0 – 26,0	25,5 – 30,0
cC	13,5 – 15,5	15,0 – 18,0	17,0 – 20,0	19,0 – 21,0	20,0 – 23,5	22,5 – 27,5
cB	15,5 – 20,0	17,5 – 21,0	19,5 – 23,0	20,5 – 24,0	22,5 – 26,0	24,5 – 30,0
cA	15,0 – 19,0	17,0 – 20,0	19,0 – 22,0	20,0 – 23,0	22,0 – 25,0	24,0 – 29,0

Circumference / Fingers (cm) / Sizes

Sizes		II	III	IV	V	VI	VII
Thumb	Bottom cX	7,0	7,5	8,0	8,5	9,0	10,0
	Top cZ	6,0	6,5	6,5	7,0	7,5	8,0
Index finger	Bottom cX	6,5	7,0	7,5	8,0	8,5	9,5
	Top cZ	5,0	5,5	6,0	6,0	6,5	7,0
Middle finger	Bottom cX	6,5	7,0	7,5	8,0	8,5	9,5
	Top cZ	5,0	5,5	6,0	6,0	6,5	7,0
Ring finger	Bottom cX	6,0	6,5	7,0	7,0	7,5	9,0
	Top cZ	5,0	5,0	5,5	5,5	6,0	6,5
Little finger	Bottom cX	5,5	6,0	6,0	6,5	7,0	8,0
	Top cZ	4,5	4,5	5,0	5,0	5,5	6,0

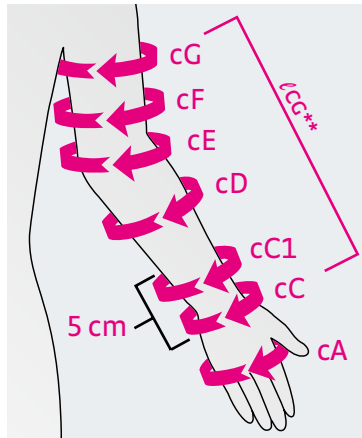
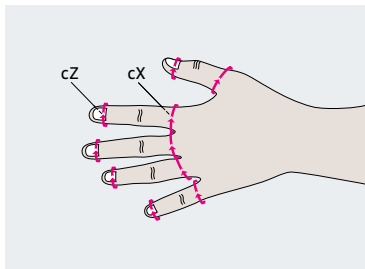
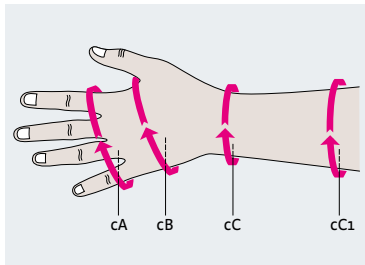
Length / Hand part (cm), all sizes

AB	3,5 – 4,5
AC	10,0 – 12,0
AC1	15,0 – 16,0

Length / Fingers (cm)

Thumb	3,5 – 4,5
Index finger	4,5 – 5,5
Middle finger	5,5 – 6,5
Ring finger	4,5 – 5,5
Little finger	3,5 – 4,5

* Measurement cC1 is 5 cm above cC



Measurement median harmony, sizing chart see page 79.

Circumference cZ is measured at the nailbed.
Circumference cX is measured at the base of the finger.

**Length cG is measured on the inside of the arm from the wrist to the anterior axillary fold.