

mediven® struva® 35

Economic care for mobile patients – clinical compression stocking with 35 mmHg at the ankle.

Indications

- Prevention and therapy of postoperative and posttraumatic oedema and haematoma as well as for reduction of concomitant pain (e.g. orthopaedic or venous surgery) ^{1,2,3,4}
- Physical thrombosis prophylaxis in mobile patients pre-, intra- and postoperative ^{5,6,7,8}
- Compressive treatment of an acute deep vein thrombosis ^{9,10,11}
- Therapy of venous leg ulcer in partially mobile / mobile patients ^{5,12}

Mode of action

The calf muscle pump is active in mobile patients. These patients therefore benefit from clinical compression stockings with a high working pressure. They increase the venous blood flow, particularly in the mobile phases. This ensures effective treatment of acute thrombosis, chronic wounds and the resulting pain as well as postoperative and posttraumatic oedema. The mediven struva 35 is particularly suitable for serious venous diseases.

Features

- Anatomically knitted stocking with precise graduated pressure gradient for differentiated physical thrombosis prophylaxis
- Colour coded size system for quick and simple selection of the correct stocking size
- Correctly applied, the textile fabric avoids painful constrictions and window oedema
- Simple handling and saving of time make things easier for nursing staff and improve patient care
- Easy donning and doffing for fast wound inspection and treatment
- High level of Compliance thanks to pleasant wearing comfort
- Highly cost-effective due to reusability



Material composition

Latex-free	Elastane (PU)	Polyamide (PA)
	41 %	59 %

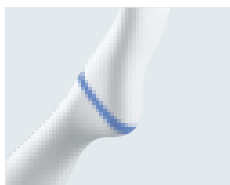
- 1 Winge R et al. Compression therapy after ankle fracture surgery: a systematic review. In: European journal of trauma and emergency surgery official publication of the European Trauma Society 2017;43(4):451–459.
- 2 Rabe E et al. Indications for medical compression stockings in venous and lymphatic disorders: An evidence-based consensus statement. Phlebology 2018;33(3):163–184.
- 3 Al Shakarchi J et al. The role of compression after endovenous ablation of varicose veins. In: Journal of vascular surgery. Venous and lymphatic disorders 2018;6(4):546–550.
- 4 Glod A et al. Kompression in der Wundbehandlung bei Ödemkrankungen. Vasomed 2019;31(2):82–92.
- 5 Attaran RR et al. Compression therapy for venous disease. Phlebology 2017;32(2):81–88.
- 6 Lee BB et al. Venous hemodynamic changes in lower limb venous disease: the UIP consensus according to scientific evidence. International angiology: a journal of the International Union of Angiology 2016;35(3):236–352.
- 7 Munoz-Figueroa GP et al. Venous thromboembolism: use of graduated compression stockings. BJN 2015;24(13):680–685.
- 8 Wrobel R et al. Messung des Kompressionseffektes von Kompressionsbinden und Strumpfvorbinden mit einem Fesseldruck von 23 bzw. 35 mm Hg. Orthopädie-Technik 1997;4:264–267.
- 9 Amin EE et al. Reduced incidence of vein occlusion and postthrombotic syndrome after immediate compression for deep vein thrombosis. Blood 2018;132(21):2298–2304.
- 10 Yadav S et al. Controversies in Venous Thromboembolism. Critical care nursing quarterly 2017;40(3):301–305.
- 11 Galanaud JP et al. 25 mmHg versus 35 mmHg graduated elastic compression stockings to treat acute symptoms of deep-vein thrombosis: the celest double-blind trial. Research and practice in thrombosis and haemostasis 2018;2:327.
- 12 Parker CN et al. Predicting the Likelihood of Delayed Venous Leg Ulcer Healing and Recurrence: Development and Reliability Testing of Risk Assessment Tools. Ostomy/wound management 2017;63(10):16–33.

Product benefits

Unique product properties meet doctors' and patients' highest demands on safety in medical care.



Variant with tricot topband
The mediven struva 35 variant with a tricot topband is particularly suitable for immobilised patients.



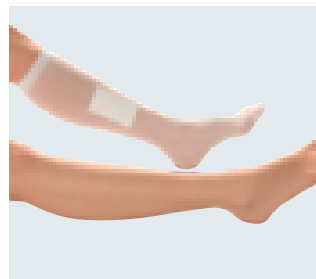
Heel / instep region
The knitted-on heel ensures the best possible pressure reduction and, together with the colour coding, makes the suitable size of the anti-embolism stocking instantly recognisable.



Open toe
The open toe is primarily in the interest of patient safety since it enables the circulation to be monitored at any time and simplifies hygiene for the interdigital spaces.

Accessories

mediven struva fix is a transparent, highly elastic and active breathing fixation bandage which is used as a universal inspection bandage instead of gauze bandages on the lower limb. See page 31 for the article numbers.



Strong compression

Knee (AD)					
Size	Leg measurements (circumference in cm)				Colour code
	Ankle cB	Calf cC	Below knee cD	Thigh cG	Heel
I	17 – 19	30 – 35	28 – 34	–	pink
II	19 – 21	31 – 37	29 – 36	–	blue
III	21 – 23	32 – 40	30 – 39	–	yellow
IV	23 – 25	33 – 42	31 – 41	–	red
V	25 – 27	34 – 44	32 – 43	–	grey
VI	27 – 29	35 – 46	33 – 45	–	green
VII	29 – 31	36 – 48	34 – 47	–	brown
Thigh (AG) also available with waist attachment					
I	17 – 19	30 – 35	28 – 34	42 – 54	pink
II	19 – 21	31 – 37	29 – 36	46 – 58	blue
III	21 – 23	32 – 40	30 – 39	50 – 62	yellow
IV	23 – 25	33 – 42	31 – 41	54 – 66	red
V	25 – 27	34 – 44	32 – 43	58 – 70	grey
VI	27 – 29	35 – 46	33 – 45	62 – 74	green
VII	29 – 31	36 – 48	34 – 47	66 – 78	brown

See page 30 and 31 for the article numbers.