

Scotsman
BIG CUBE

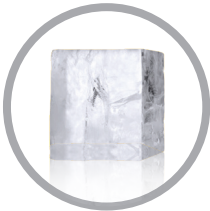
BC0530 - 500lb Big Cube Ice Machine

Modular Big Cube Ice Machine



Features & Benefits

- Perfectly square, individual big cubes
- Big cubes are slow melting, which cools drinks without diluting them
- Produces 108 cubes every harvest cycle - approximately every 30 minutes
- Horizontal evaporator minimizes impurities resulting in clearer cubes and reduced scale buildup between cleanings
- Unit specific QR code for quick access to service manuals, cleaning guides and warranty history
- Heavy duty stainless steel exterior panels for maximum durability and lifespan
- Designed, engineered and assembled in the USA



Perfectly square, slow-melting individual big cubes



Unit specific QR code for quick access to service manuals, cleaning guides and warranty history



24 Hour Volume Production

Air Cooled

| | | |
|-----------|-------|-----------|
| 70°F/21°C | Air | 90°F/32°C |
| 50°F/10°C | Water | 70°F/21°C |
| 428/194 | | 383/174 |
| lb/kg | | lb/kg |



Modular Bin Options

| Model Number* | Dimensions W" x D" x H" | Bin Application | | Ship Weight lb/kg |
|---------------|-------------------------|-----------------|------------------|-------------------|
| | | Capacity lb/kg | Finish | |
| B330P | 30 x 34 x 37** | 344/156 | Poly | 130/59 |
| B530S or P | 30 x 34 x 44** | 536/244 | Metallic or Poly | 150/68 |

* Contact Scotsman for bin top requirements. ** Add 6" Height for bin legs.



B330P



B530S



Big Cube Ice



Big cubes are ideal for premium cocktails, clubs and restaurants.

Big Cube
1 1/4" x 1 1/4" x 1 1/4"
(3.18 x 3.18 x 3.18 cm)



Certification



Warranty

- 3 years parts and labor on all components.
- 5 years parts on the evaporator and compressor.
- Warranty valid in North, South & Central America for commercial installations.
- Contact factory for warranty in other regions.
- Residential Applications: 1 year parts and labor

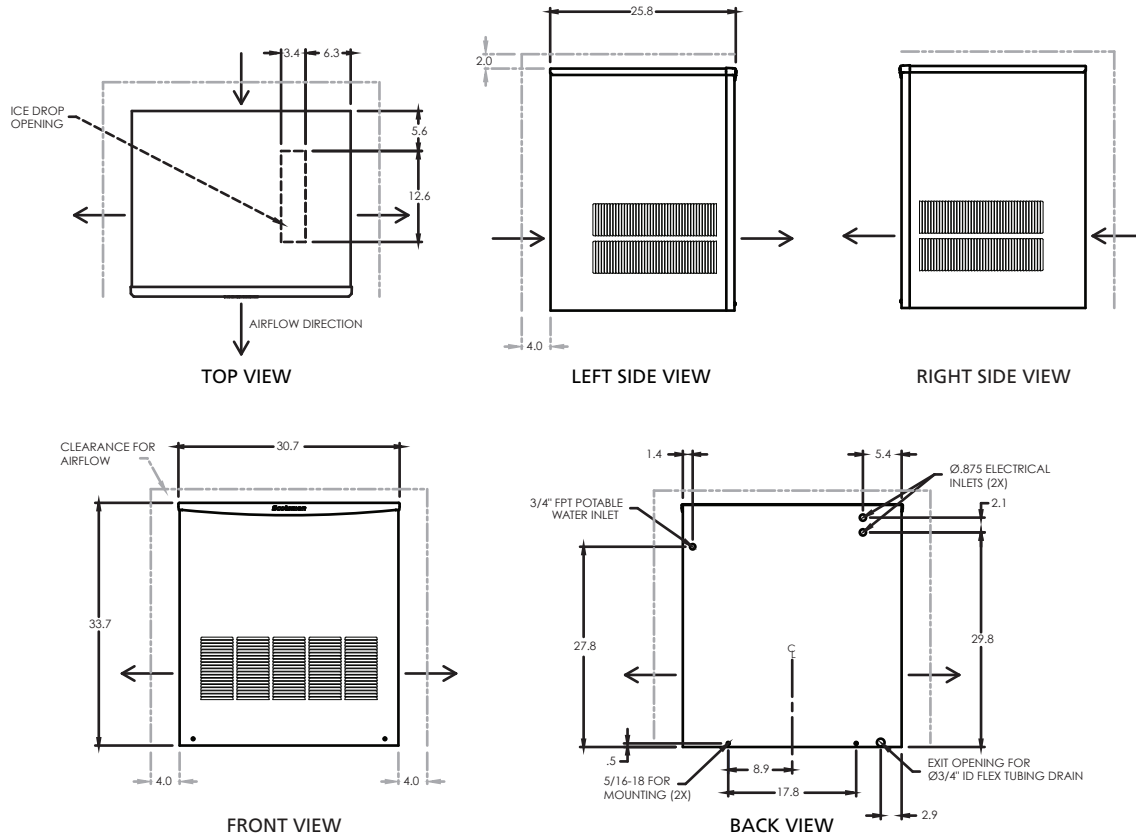
Scotsman

- 101 Corporate Woods Parkway, Vernon Hills, IL 60061 •
- 1-800-SCOTSMAN • Fax: 847-913-9844 • www.scotsman-ice.com • customer.relations@scotsman-ice.com •

BC0530 - 500lb Big Cube
Ice Machine

BC0530 - 500lb Big Cube Ice Machine

Modular Big Cube Ice Machine



BC0530 - 500lb Big Cube Ice Machine



Specifications

| Model Number | Condenser Unit | Basic Electrical Volts/Hz/Phase | Max. Fuse Size or HACR Circuit Breaker (amps) | Circuit Wires | Min. Circuit Ampacity | Energy Consumption kWh/100 lb (45.4 kg) 90°F(32°C)/70°F(21°C) | Water Usage Gallons/100 lb (liters/45.4 kg) | |
|--------------|----------------|---------------------------------|---|---------------|-----------------------|---|---|---------------------------------|
| | | | | | | | Potable 90°F(32°C)/70°F(21°C) | Condenser 90°F(32°C)/70°F(21°C) |
| BC0530A-1 | Air | 115/60/1 | 25 | 2 | 19.6 | 5.92 | 14.2 | - |



All Models

Dimensions (W x D x H):

Unit: 30.7" x 25.8" x 33.7"
(77.9 x 65.5 x 85.6 cm)

Shipping Carton: 36" x 31" x 41"
(91.4 x 78.7 x 104.1 cm)

Shipping Weight: 235 lb / 107 kg
BTUs per hour: 6,704

Refrigerant: R-404A



Accessories

| Model Number | Description |
|--------------|-----------------------------------|
| KBCSTK30 | Stacking kit – up to 3 units high |

Scotsman recommends all ice machines have water filtration. See Scotsman water filter specification sheet for details.



Operating Requirements

| | Minimum | Maximum |
|--------------------|-------------------|-------------------|
| Air Temperatures | 50°F (10°C) | 100°F (38°C) |
| Water Temperatures | 40°F (4.4°C) | 100°F (38°C) |
| Remote Cond. Temps | -20°F (-29°C) | 120°F (49°C) |
| Water Pressures | 20 PSIG (1.4 bar) | 80 PSIG (5.5 bar) |
| Electrical Voltage | -5% | +10% |