

SENSORY ROOM INSTALLATION

Item Code: 22874 - Double Bubble Bonanza

Combines two Snoezelen favourites bubble tubes and wall panels. Bubbles and colour can be individually controlled in each of the two chambers.

Be amazed as the bubbles dissipate in one chamber only to burst into life in the other. The panel is packed with sound effects and music which makes for a truly exciting multi-sensory experience. The stunning effects stimulate, empower and engage.

Perfect for co-operative play, turn taking and follow-my-lead activities.

Features include:

- With 42 unique effects
- With two bubble chambers the bubbles and colour of each can be controlled independently
- Great for pair work and co-operative activity
- Can be used by one person to promote bilateral movement
- Encourages choice and control
- 3 modes of operation interactive, creative and music
- With gentle vibration for tactile input
- Accessible and illuminated push buttons to control bubbles and colour
- Can be use with a microphone for a sound to light effect to encourage vocalization



Item Code: 21550 Theragym Seesaw Glider & Swing

Three swings in one! This multipurpose vinyl-covered swing can be used in a variety of ways: as a traditional glider; as a seesaw; or on an incline, providing significant versatility in the therapy space. With three points of attachment for multiple functions, simply adjust the height of the rungs by knotting the rope. Comes complete with 6 safety snaps and a 182cm long rope.

Working load: 180kg (400 lbs)

Size: 122cmL x 43cmW



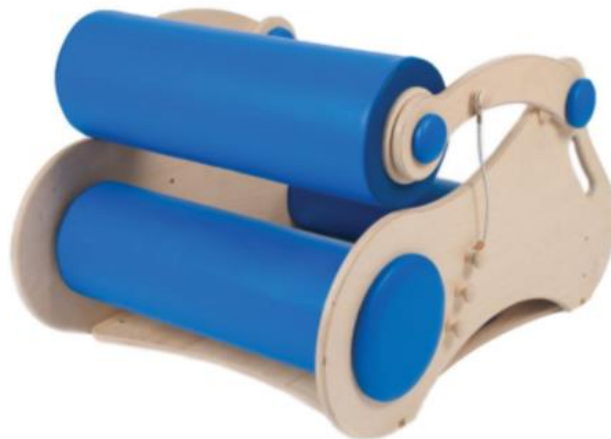
Item Code: 22083 Body Roller

Provides deep pressure as the child crawls between the rollers for additional sensory input. In a similar way to babies being calmed by swaddling and being wrapped tightly in a blanket, deep pressure can be soothing and relaxing.

Deep pressure is especially beneficial for children with ASD and ADHD, and can help reduce tactile defensiveness in those who cannot tolerate being touched (hypersensitivity or over-sensitivity to touch).

Providing appropriate sensory input through a product like this Roller may reduce self-stimulation and self-harming amongst children craving deep pressure. Moving through the rollers can help with motor planning, and can be used as part of imaginative play.

Tension and pressure are easily adjusted to each user's specific needs you can choose the appropriate level of proprioceptive feedback for your child. There are 4 settings available by adjusting the bungee cords on the side. The rolls are fully padded which helps the child to relax. Available in red, green and blue please specify colour choice when ordering.



For use by a suitably qualified therapist

- User weight limit: 136kg (300 lbs).
- Size: 100L x 75W x 58cmH

Item Code: 20530 Bubble Swing

Colourful and comfortable. Suspended from one point, the client can straddle the swing and hold on with both hands. Suspend from 2 points and the client can lie on it prone or straddle and glide. Filled with micro-fibre for a bean bag sensation. Removable cover for cleaning. Includes 2 safety snaps.

Working load: 159kg (350 lbs)

Size: 104cmL



Item Code: 13734 Adjustable Scooter Board

For smaller clients simply use the smaller 35cm x 46cm Scooter Board.

For larger clients, unlock the Scooter Board, insert and lock the extra leaf in place, and you have a 35cm x 60cm Scooter Board.

Special covered padded board for added comfort.

Made of varnished wood.

Working Load 150lbs.

Size: Length 45 - 60cm, 38cmW



Item Code: 21582 Scooter ramp

Ideal for promoting postural extension, motor coordination and fun activities. The wide top platform allows users to turn smaller scooters around. Made from extremely strong Baltic birch. Folds flat for easy storage. No tools are required for assembly. Weight capacity: 113kg (250 lbs)



Item Code: 22523 Chatsworth Settee 2 seat

The Chatsworth Range by Rompa®

This ever-popular range is now better than ever

- Ergonomically designed
- With a higher cushion for additional back support
- Solid foam with separate cushions but without a rigid wooden frame
- Multi-sensory, with eye-catching and tactile fabric options
- Contemporary and aesthetically pleasing for a multitude of environments, including homes and waiting areas
- Softer, slimmer and more curvaceous styling
- Supportive without compromising on comfort



Item Code: 21966 Micro Music System

A light-weight and easy to install ceiling centre-piece. Decorative and offers visual interest, especially to users who spend a lot of time lying down and looking upwards.

Install out of reach as this is not intended to be handled.

Dark blue. Aluminium ring with a serge material centre.

Light Source (e.g. 19210) to be purchased separately.

Can be useful for masking an unsightly or uneven ceiling.

This product could look especially effective if used in multiples, in a line down a corridor, or grouped together as a central ceiling focal point.

Most effective in a darkened environment.



Item Code: 16736 Riverstones

Jump from 'stone' to 'stone' without touching the floor.

Move as quickly as you can, imagining that the stones are hot.

Useful for co-ordination, balance, spatial awareness and encouraging confidence.

Made of stable synthetic material with a textured surface for better grip.

Set of six stones of two sizes:

Approx 43 x 43 x 43cm x 9cmH

Approx 25 x 25 x 25cm x 4cmH



Item Code: 14925 Snoezelen Vibrating Floor

This cushioned wooden floor vibrates automatically or in response to music or vocal stimuli.

It is particularly suitable for those with mild or total sight/hearing loss as it provides valuable tactile stimulation.

Also used for those with autism.

Provides three methods of vibratory stimulation:

Built in oscillator to vary frequency and extent of vibrations.

Musical stimulation.

Amplifier and leads supplied for ease of connection to any music centre or radio.

Used with the microphone provided it can help to stimulate vocalisation.



Item Code: 21748 Snoezelen Shimmering Curtain

A spectacular shimmering curtain of fibre optics which continually change colour.

Place at the entrance of your SNOEZELEN or attach to the wall for visual stimulation.

The 66 plastic fibre optic strands should not be vigorously pulled.

Our plastic tail fibre optics are the safest on the market, even so they should not be mouthed or chewed as doing so can expose sharp edges.

Dimensions 2mL x 1mW



Item Code: 17687 Suspension System

Total versatility!

Eliminate the need for costly architects, engineers and builders

The answer for therapists who cannot install a suitable ceiling support eye bolt or who may move premises frequently.

- Made from thick structural steel tubing 12.7cm x 7.6cm
- Solid, stable and free-standing
- Will support almost any piece of suspended equipment
- Stays in place even with rigorous activity
- Will not slip or slide
- Spacious standard system includes 3 forged eye bolts spaced 90cm apart on the top beam
- Uprights and bases are heavily padded for added protection
- Easy to assemble and take apart for transportation
Perfect for rooms where the ceiling is not strong enough to support SI equipment
- Working load approximately 600kg (1,322lbs)
- Weighs approximately 317.5kg (700lbs)
- Size: 3 metres (10ft) high, 3.6 metres (12ft) long and 2.4 metres (8ft) deep at the base.



Mats and swings to be purchased separately

Item Code: 15410 Aroma Diffuser Professional

Create the ideal atmosphere for relaxation sessions using this Aromatherapy Diffuser. It is a clean, safe and effective way of dispensing aromas without using a hot ring or naked flame. Instead, a stream of air diffuses the essential oil without heating it, which can alter both the fragrance and its therapeutic properties.

- Economical to run;
- Safe for use with children and the elderly;
- Controllable high and low settings;
- Easily moved from room to room.
- Includes one easy to change top-up cartridge



Item Code: 20259 Snoezelen Color Wall

Walls awash with colour! Dramatic and striking lighting from one compact unit!

Provides a flood of colour using ultra bright, low-maintenance LED bulbs.

Can be operated by an external DMX controller.

With stand-alone mode for passive colour change.

Includes a voice responsive mode.

Adjustable speed..

Suitable for indoor use.



Item Code: 16792 Wall Paletto

Wonderful for cause and effect exercises and for encouraging listening skills, concentration and recognition. With 64 pre-recorded sounds - some will make you laugh, some will evoke memories and some will stimulate the imagination. Sounds can be associated with stories you relate - use them to set the scene and provide an audible backdrop to your narration. Clients of all abilities can join in.

Pre-recorded sounds are divided into 8 groups: people, hygiene, indoor, animal, vehicles, city, who's job? and various. Sounds include: telephone, nose blowing, whistling, burping, applause, cuckoo, cow, pig, doorbell, ship, car, church bells, conversation and fireworks.

Supplied with a microphone to record your own sounds, words or music

Improved more compact shape. With a replaceable memory card

With LEDs above each switch for visual as well as audible feedback

Compatible with loud speakers and amplifiers

Incorporates automatic and manual scanning

Low voltage



Item Code: 19210 Snoezelen Light source

With LED technology, this Wi Fi light source is quiet, cool-running and maintenance-free.

Compatible with an interactive device such as Colour Changing Panel, Wi Fi Microphone, Talking Cubes or 8 Colour Wirefree Controller.

Ideal for sensory stimulation, colour recognition, and developing the understanding of cause and effect.

Compact and can be wall-mounted.

It provides an effective, but compact light source for fibre-optics.

Size: 18L x 8W x 5cmH

Fibre optics sold separately



Item Code: 21560 Bolster Swing

One point of Attachment!

A deluxe, versatile swing that can be used for a variety of progressive planning challenges. Includes a textured rug for variable tactile input and safety snap for single point of attachment.

Weight capacity: 295kg (650 lbs)

Size: rope 198cmL; swing 120cmL x 25cm diameter



Item Code: 19873 Tactile Street One

Includes sandpaper, rubber, artificial turf, cork, carpet, plastic.

Textured delights for the feet - and fingers!

Arrange the plates in straight or jagged lines on the floor or wall-mount for exploration for hands.

Each set of 6 offers a variety of textures offering tactile, colour and temperature contrasts.

Each high quality plate has a wooden frame with cork pads on the underside to protect your surfaces.

Good value, the set equates to less than £35 per plate. Buy all three sets at an even better price.

Size: 31.5 x 36cm (external dimensions); 24 x 28cm (internal dimensions)



Item Code: 18870 Snoezelen Talking Cube

- The Talking Cube can be easily adapted for a large range of educational, play and therapeutic interventions.
- Can be targeted to develop understanding of cause and effect, colour recognition, picture recognition, listening and motor skills, concentration.
- Encourages physical movement to reach, grip, bend and throw the cube, develop co-ordination alongside the vestibular and proprioceptive senses and interaction with the environment.
- Individual cube faces are sound customizable - allowing voices or sound recordings, supporting targeted therapy, learning or play goals (e.g. colour recognition - when "rolled" it shouts out the name of the symbol/colour/image that is uppermost).
- Can be programmed with different languages.

Product benefits include:

- Promotes inclusivity, choice, control and accessible learning and can be personalized with sound and pictures.

- Carefully designed to facilitate use for all, including people with fine/gross motor skill difficulties, visual impairment etc.
- Activates individual products or all Wi-Fi products in a room (e.g. bubble tubes, wall panels, lighting)
- Is wireless for safety and fully customizable for personalised/themed learning, play or therapeutic use.
- Multi-sensory product (visual, audible, tactile).
- Particular sounds could be used to teach sound recognition/discrimination or therapeutically to grade up/down noise sensitivity).
- Each colourful side has a transparent pocket, customisable with space for pictures, symbols, photographs and images.

Suggestions for use (for images and corresponding sounds to record):

- Dots to turn this into a die for group games
- Photographs for chance games to encourage social skills like turn-talking, sharing, joining in
- Numbers for fun math's activities involving probability, adding etc.
- Shapes for shape recognition activities
- Words for literacy activities
- Phonics for language activities
- Pictures for story-telling and imaginative play or for songs e.g. animal images for Old McDonald had a farm
- Images of a stick man in different positions to encourage movement and exercise
- Words in other languages such as French, German for either learning that language or to encourage inclusive activity in a multi-ethnic group
- Size: Approx 30x30x30cm



Item Code: 21570 Safety Snap

Provides a connection between equipment and either an accessory and/or the final point of suspension. With an integral locking mechanism that screws closed over the opening to prevent the snap from opening inadvertently. Zinc-plated steel.

Supports 25 Kilo newtons (255Kgf) and meets requirements of EN362:2004.

Weight: 180g



Item Code: 21559 Safety Rotational Device

Provides a connection to a single suspension point using the included Safety Snap, allowing for smooth and safe rotation of equipment in a clockwise or anticlockwise direction. Strong aluminium body with steel roller bearing and forged eye ring. Weight capacity: 725kg (1600 lbs)
Use either way up.



Item Code: 21548 Height Adjustment System

Provides you with the best way to vertically adjust your equipment for every client's individual needs. One of the most critical pieces of equipment to provide flexibility and versatility for any therapy program. Includes a [Safety Rotational Device \(21559\)](#), [3m Therapy Rope \(21607\)](#), [Safety Snap \(23011\)](#), Vertical ascension device, and a locking carabiner (more than simply [21607](#) and [21546](#)). An additional [Safety Snap \(23011\)](#) is needed to secure the system to the endpoint of suspension and should be purchased separately. Working load: 225kg (500 lbs)



Item Code: 56408 Write on / Wipe Off Speech Light

This little backlit speech bubble light is perfect for wall mounting on therapy walls. Quick and easy write on/wipe off, with dry-wipe pen/eraser included. Add personalised instructions, phonemes, directions, symbols etc. to lighten up therapy sessions.
Requires 4 AA batteries or can be powered via usb (cable and batteries not included) 14.5Wx12.5Hx4cmD.



Item Code: 55593 The U play mat and 100 cards

A cleverly designed "U" shaped mat with 10 clear pockets that can be used for a variety of play and/or learning activities.

A child sits inside the "U", and is surrounded by relevant stimuli that help to hold attention and concentration, supporting focus on the chosen activity. The child has full visual and tactile access to the whole surface, without having to crawl across the mat. It is very versatile and can be used for all sorts of learning, language and sequencing activities.

Includes 2 decks of 50 Cards (25 matched pairs) with the topics "Animals" and "Food" with a handy activity guide for therapists, educators, parents and caregivers to aid in planning and implementing activities with reproducible data sheets to record the child's responses and track his or her progress.

Wipe-clean vinyl.



Item Code: 56177 Carry Case Puppet Theatre and Shop

This colourful, reversible theatre/shop is perfect for tabletop storytelling, roleplay and imaginative play.

Develop speech and language skills by expanding vocabulary, word sounds, articulation and imagination using hand or finger puppets illustrating songs, tales and nursery rhymes.

Use the "shop" side for role playing activities

Features a chalk board for personalisation and packs into a small case with carrying handle.

For 3 yrs and over - small parts. Size: (when put together) 68H x 62W x 12cmD (When in case) 16.5H x 62W x 6cmD



Item Code: 21922 large 16-dome acrylic mirror

Visually stimulating features for indoors or out. Scratch-resistant, the mirrors provide distorted and fun views to amuse young and old alike. With fixtures to attach to a flat surface. Especially effective when used in multiples.

Depth: 10cm including the mounting corner bracket.

Dimensions 78cm



Item Code: 21923 large 4-dome acrylic mirror size

Visually stimulating features for indoors or out. Scratch-resistant, the mirrors provide distorted and fun views to amuse young and old alike. With fixtures to attach to a flat surface. Especially effective when used in multiples.



Item Code: 21920 Giant Dome Acrylic Mirror

Visually stimulating features for indoors or out. Scratch-resistant, the mirrors provide distorted and fun views to amuse young and old alike. With fixtures to attach to a flat surface. Especially effective when used in multiples. Giant Dome Acrylic Mirror 78cm

